

Globalhome[®]

Be different. Make it happen.

STONE • TOPS • WOOD • TILE • SANITARY

About Us



A JOURNEY OF GROWTH & EXCELLENCE SINCE 2012

Antolini®




NATURAL STONE



 zerocare®plus

Enhances the material, unveiling its fine grain and a unique, silky touch.

 vacuumprocess®

Strengthens the full slab thickness with exclusive, high-quality Antolini® resins.

 zerobact plus

A protective coating that shields natural stone while keeping its color and beauty intact.

FINISHES

LEATHER

LUX POLISHED

MATT

FORMAT

SIZE VARIES



Corteccia



Dover White



Elegant Brown Quarzite



Explosion Blue



Zebrino Black



Le Pell Azul



Belvedere

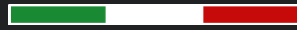


Python Black

For Actual Slab Photos
SCAN HERE



Antolini®



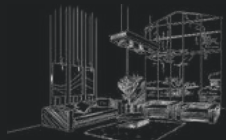
NATURAL STONE



APPLICATIONS



INTERIOR
DESIGN



WALL
ACCENT



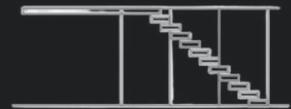
SHELVES
& CONSOLE



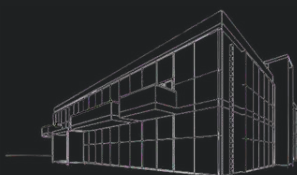
BACKLIGHT



KITCHEN
FLOORS & WALLS



FLOORS, WALLS &
STAIRS



COMMERCIAL
BUILDINGS



INDOOR &
OUTDOOR



Alabang 400
Muntinlupa City

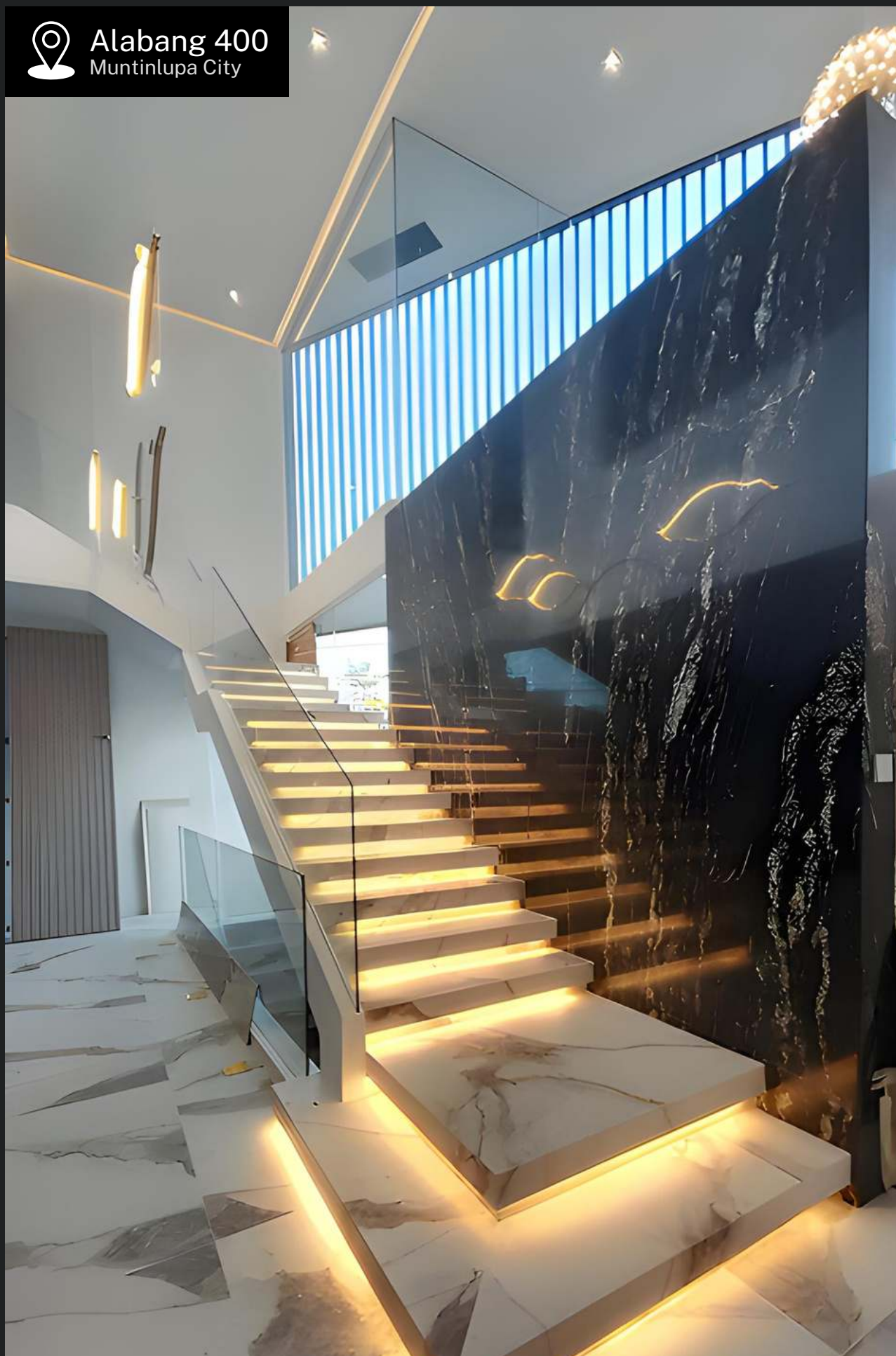



Belvedere
Wall Accent

Format: Size Varies
Finish: Lux Polished



Alabang 400
Muntinlupa City



 **P. Domingo**
Makati City



Patagonia Original

Wall Accent

Format: Size Varies

Finish: Lux Polished

Belvedere

Flooring

Format: Size Varies

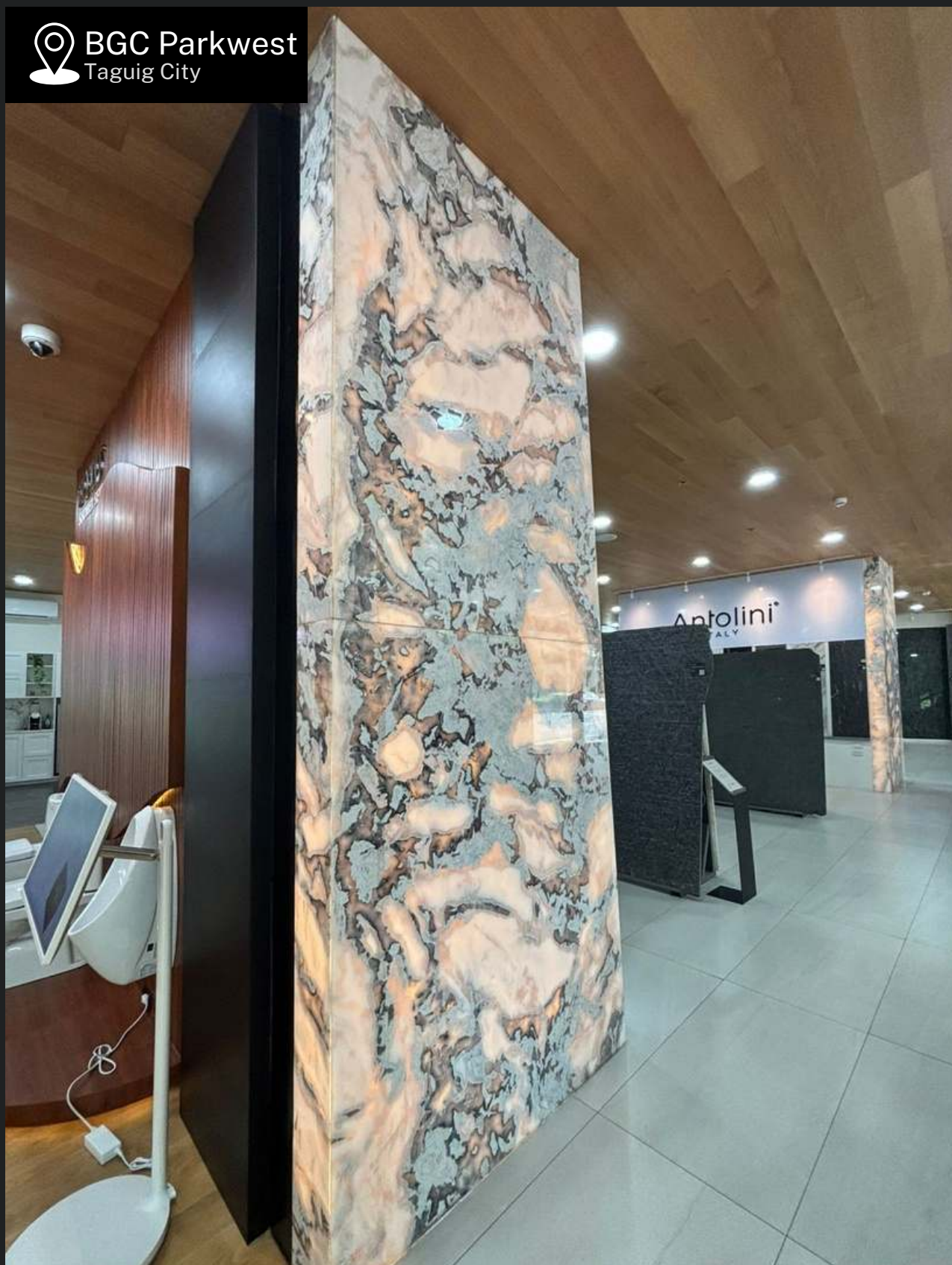
Finish: Lux Polished

 **Grand Hyatt**
BGC, Taguig City



Patagonia Original
Wall Accent

Format: Size Varies
Finish: Lux Polished



Dover White
Wall Accent

Format: Size Varies

Finish: Lux Polished



Casa Elena
By: Ar. Mike Peña

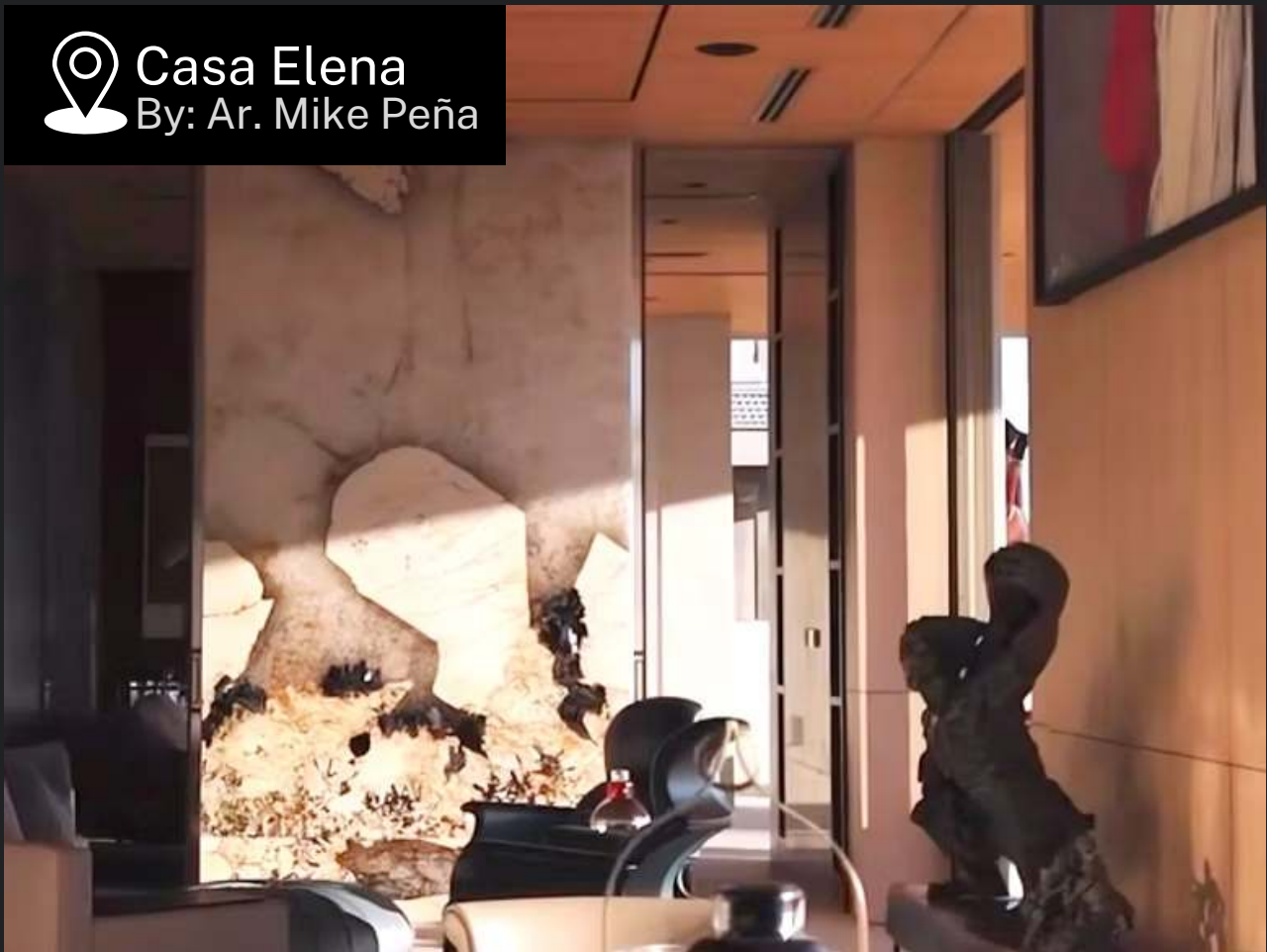


Black Cosmic
Wall Accent

Format: Size Varies
Finish: Lether



Casa Elena
By: Ar. Mike Peña



Patagonia Original
Wall Accent

Format: Size Varies
Finish: Lux Polished

Antolini | Tech SAPIENSTONE®



ENGINEERED STONE



SINTERED STONE



STAIN
RESISTANCE
ISO - 10545-14



RESISTANCE TO
CHEMICAL PRODUCTS
ISO - 10545-13



SCRATCH
RESISTANT
ISO - 10545-6



RESISTANT TO
LIGHT
ISO - 10545-9



HEAT
RESISTANT
EN-14617

FINISHES

POLISHED

SATIN

SILKY

NATURALE

STRUCTURED

FORMAT

160x320cm



Taj Mahal



Bianco Lasa Macchia Vecchia



Piasentina



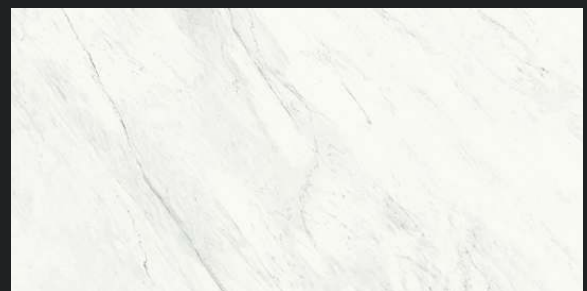
Ceppo Grey



Fior Di Bosco



Bianco Lasa Vena Oro



Premium White



Arabescato

For Actual Slab Photos
SCAN HERE





APPLICATIONS



INTERIOR
DESIGN



WALL
ACCENT



SHELVES
& CONSOLE



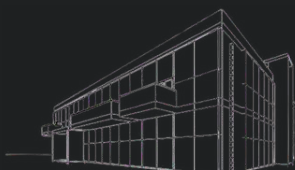
VENTILATED
FACADE



KITCHEN
TOPS & WALLS



BATHROOM
FLOORS & WALLS



COMMERCIAL
BUILDINGS



INDOOR &
OUTDOOR



Valenzuela City

Photo credits to: plumedesignhouse



Calacatta Vena Oro
Countertop

Format: 160x320cm
Finish: Polished



Valenzuela City

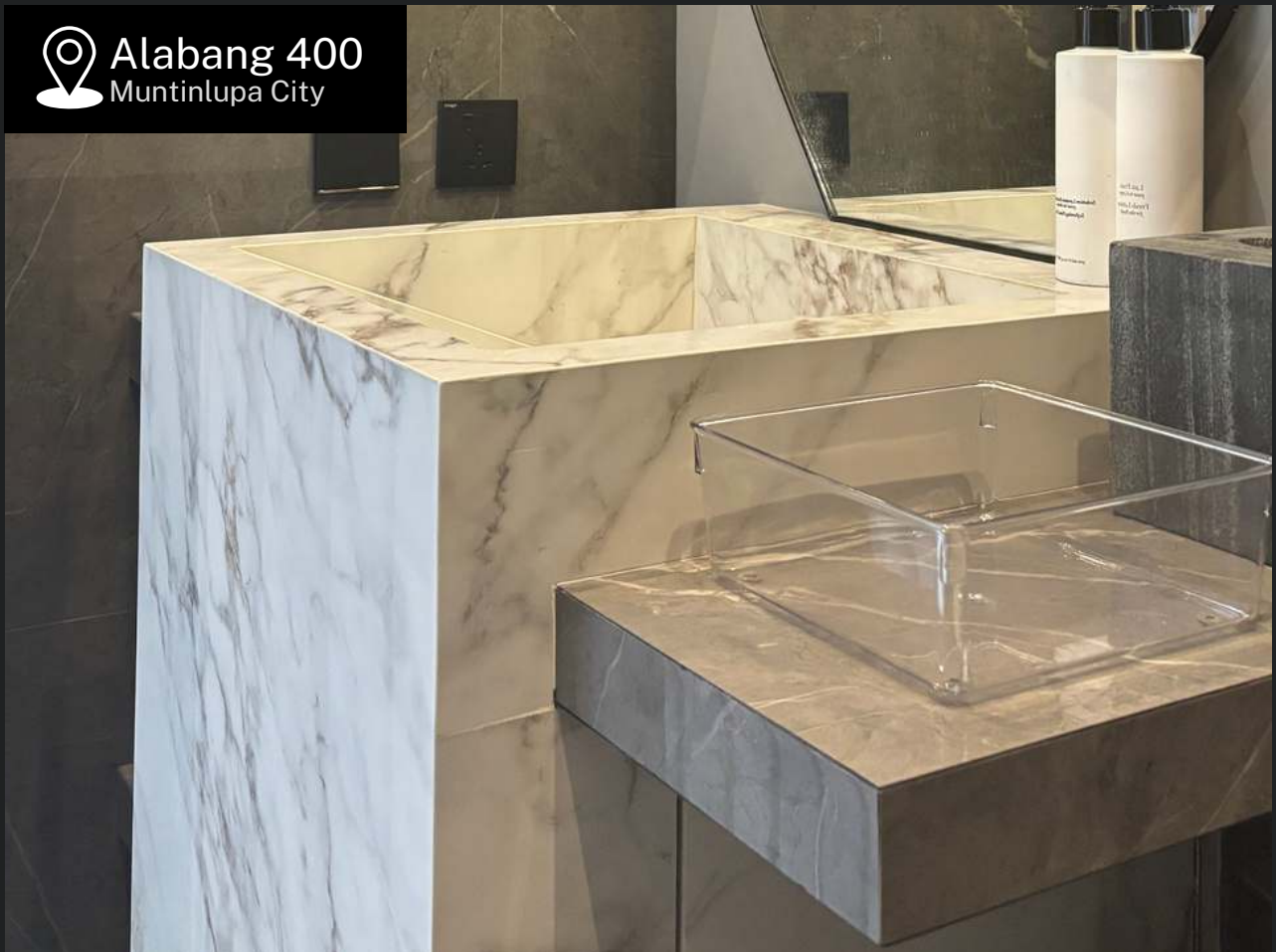




Arabescato
Countertop

Format: 160x320cm
Finish: Polished

Alabang 400
Muntinlupa City



BATHROOM VANITY TOP



**Calacatta Macchia
Vecchia**
Countertop

Format: 160x320cm
Finish: Polished



Melrose Alabang Village
Las Piñas City





Salcedo Village
Makati City



Piasentina
Countertop

Format: 160x320cm
Finish: Structured



Salcedo Village
Makati City



Listone Giordano®



ENGINEERED WOOD



High Precision
of the Joints



Multi-layer
Technology



Crystalcare
Protection



Resistance to
Thermal Condition

Why Listone Giordano®

QUALITY



Engineered Wood

- Multi-layer support provides high level of **stability**.
- **Crystalcare®** best protection for surface with common domestic liquids
- **Child-friendly** environment with Toy Certification (EN71-3)
- Automatically **protects surfaces** from microbes and pathogenic agents
- **Resistant** to huge foot traffic

Solid Hardwood

- **Cupping** and **crowning** due to absorption of excess moisture
- Stucco **deterioration** and dirt accumulation
- Without extra treatment, **termites** are attracted and likely to infest
- Absorb water seepage and build **molds**
- **Uneven surface**. Irregularities in the base support show up on the surface

Why Listone Giordano®

INSTALLATION



Engineered Wood

- **Glue-down** application and without hollow sound
- **Direct application** is highly efficient. and stronger base support
- **Ready** to be walked on. no treatment required after installation
- No sanding or polishing needed. once it has been laid, **no waiting**
- **Extraordinary precision joints**, tongue and groove system and cut using diamond-tip

Solid Hardwood

- **Intricate** application and required blind nailing
- **Sub-flooring** application before hardwood
- **Need to stabilize** the planks for few weeks after installation
- Required **crack filling, sanding** and **polishing** after installation
- **Irregular** edge and surface of hardwood and splinters problem

Why Listone Giordano®

MAINTENANCE



Engineered Wood

- **Crystalcare®** Protection
- Use **normal mop** to wash and clean the floor regularly
- **Crosscuts** provides flexibility
- **Ready** to be walked on, no sanding or polishing needed
- More **practical** application and perfect anywhere in the house

Solid Hardwood

- **Re-wax** the surface for continuous protection
- **Deep clean** to remove dirt, oil and grime build-up over time
- **Absorb** water and retain smell
- Develop unpleasant **wood stain odor** over time
- **Costly** maintenance to maintain looks and durability

FINISHES

FIBRAMIX

MATT FIBRAMIX

MATT COUNTRY

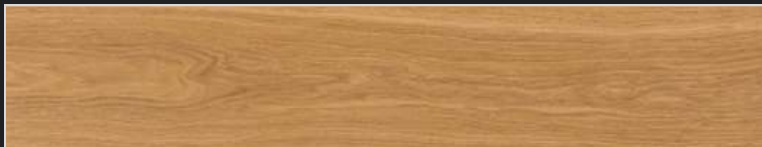
OLEONATURE UNICA

FORMAT

Size Varies



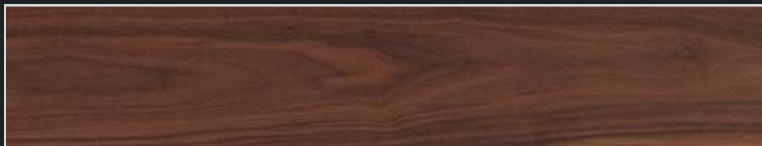
Oak Tortora
Matt Fibrmix



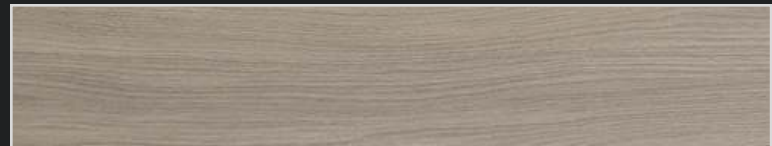
Rovere Oak Puro
Fibrmix



Oak Cashmere
Fibrmix



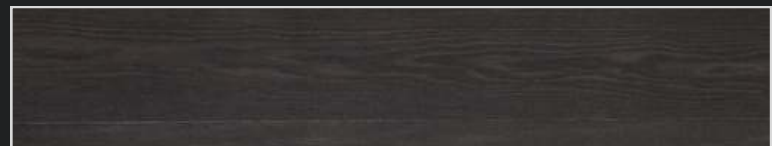
American Walnut (Noce Canaletto)
Oleonature Unica



Rovere Oak Grigio Di Luna
Matt Fibrmix



Rovere Oak Tamarindo
Matt Country



Rovere Oak Testa Di Moro
Fibrmix

Listone Giordano®



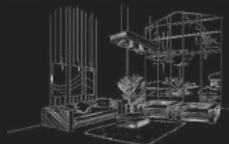
ENGINEERED WOOD



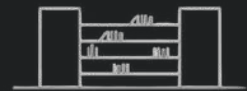
APPLICATIONS



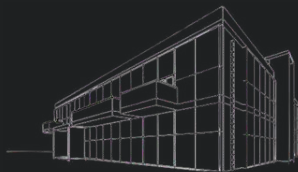
INTERIOR
DESIGN



WALL
DECORATION



SHELVES
& CONSOLE



COMMERCIAL
BUILDINGS



KITCHEN
FLOORS & WALLS



INDOOR &
OUTDOOR



Rovere Oak Puro

Wood Flooring

Format: Size Varies
Finish: Fibramix



American Walnut

Wood Flooring

Format: Size Varies
Finish: Fibramix

ariosted®



ITALIAN TILES



STAIN
RESISTANCE
ISO - 10545-14



RESISTANCE TO
CHEMICAL PRODUCTS
ISO - 10545-13



COLOR RESISTANCE
TO LIGHT
ISO - 10545-9



DEEP ABRASION
RESISTANCE
ISO - 10545-6



WATER
ABSORPTION
ISO - 10545-3



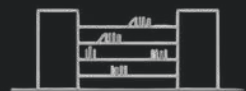
APPLICATIONS



INTERIOR
DESIGN



BATHROOM
FLOORS & WALLS



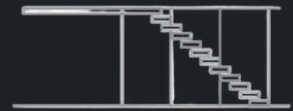
SHELVES
& CONSOLE



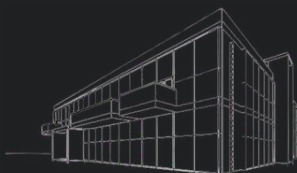
BACKLIGHT



KITCHEN
FLOORS & WALLS



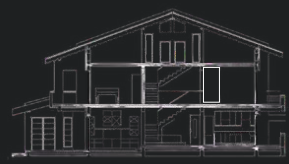
FLOORS, WALLS &
STAIRS



COMMERCIAL
BUILDINGS



VENTILATED
FACADE



INDOOR &
OUTDOOR

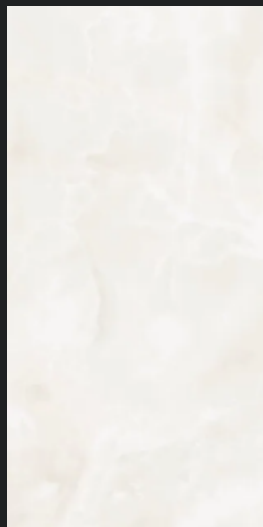
ULTRA Collection

FORMAT

150x300 / 100x300 / 120x270



Arabescato Statuario (Bookmatch)



Onice Bianco



Cloud Soft



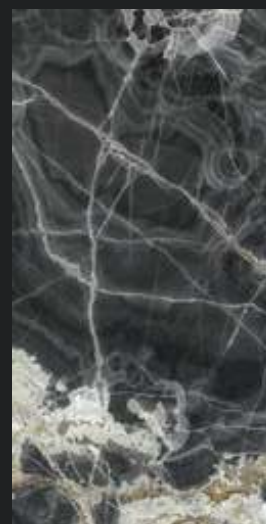
Onice Ivory



Sahara Noir



Bianco Calacatta



Onice Nero



Calacatta
Macchia Vecchia



Panda White

For Actual Slab Photos
SCAN HERE





Tropical Black
Wall Accent

Format: 150x300cm
Finish: Polished



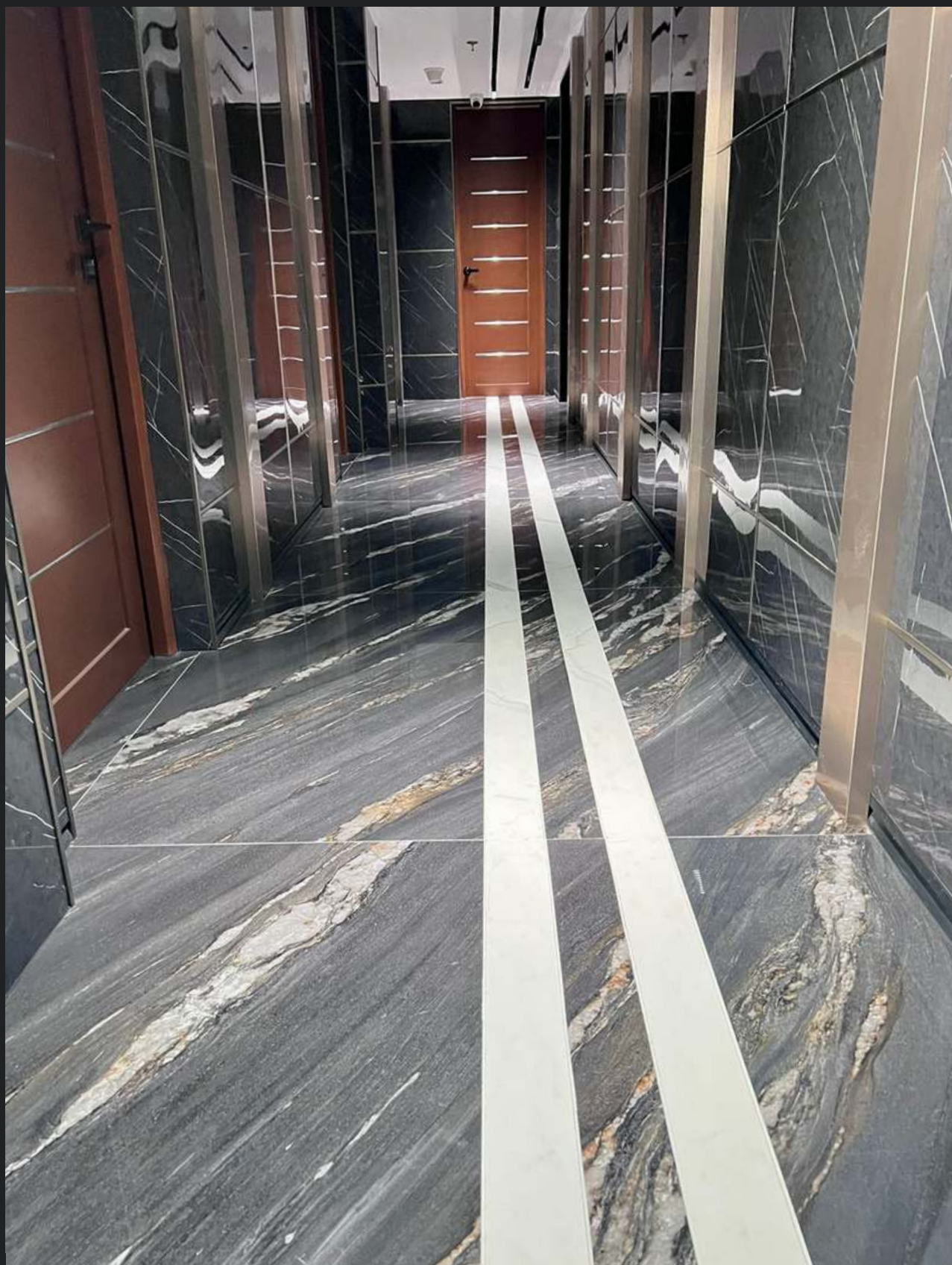
P. Domingo
Makati City



Capraia
Tile Flooring

Format: 150x300cm

Finish: Polished



Tropical Black

Wall Accent

Format: 150x300cm

Finish: Polished

Nero Marquina

Flooring

Format: 150x300cm

Finish: Polished



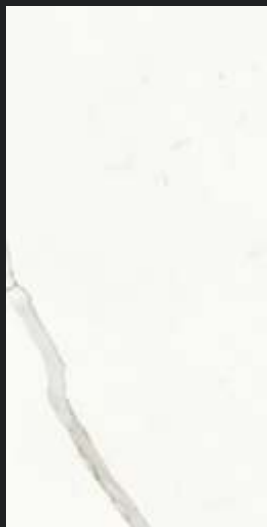
Arabescato Statuario
Wall Accent

Format: 150x300cm
Finish: Polished

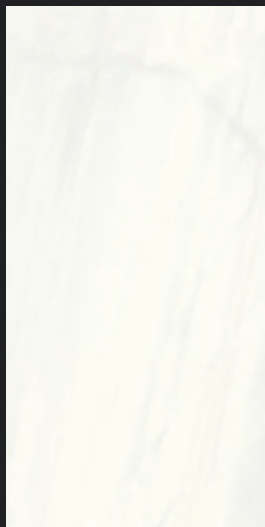
MARMI CLASSICI

Collection

FORMAT: 60x120



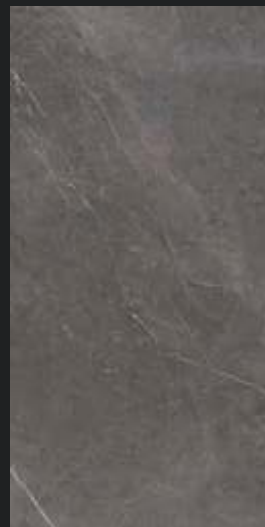
Statuario Classico



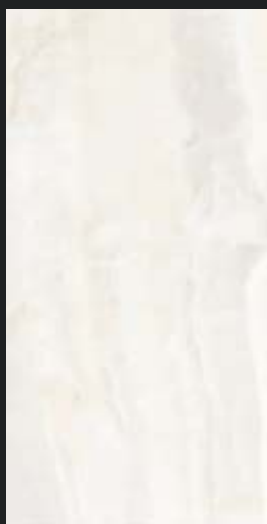
Bianco Covelano



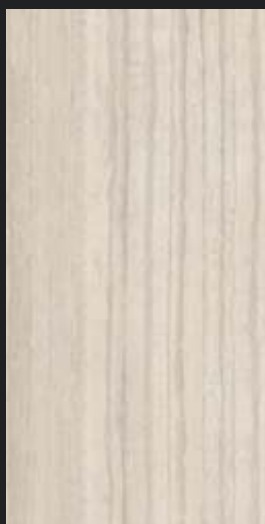
Fior Di Bosco



Grey Marble



Onice Perlato



Travertino Silver
MC



Travertino Santa
Caterina



Travertino
Romano MC



Nero Marquina



Calacatta
Macchia Vecchia

For Actual Slab Photos
SCAN HERE





Azure

Wall

Format: 60x120cm

Finish: Natural Plus (R10)

Travertino Silver MC

Flooring

Format: 60x120cm

Finish: Natural Plus (R10)



Licorice

Wall

Format: 60x120cm

Finish: Natural Plus (R10)

Anise

Flooring

Format: 60x120cm

Finish: Natural Plus (R10)

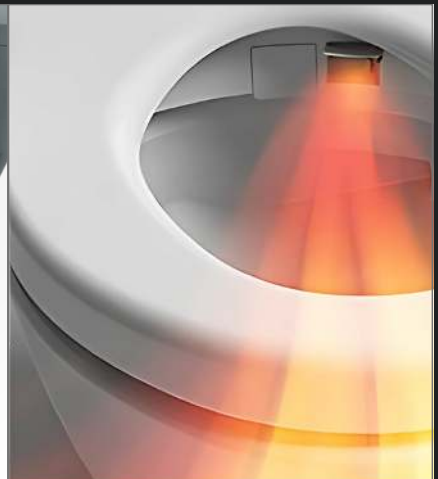
TOTO®



WATER TORNADO



HEATED SEAT



WARM AIR DRYING

TOTO®

NEOREST LS

CS911PVT / TCF87120GAA



NEOREST LS

CS911VT / TCF87220GAA



NEOREST RS

CS921VT/TCF83410GAA



NEOREST AS

CS921VT/TCF85510GAA



Globalhome®
Stone • Tops • Wood • Tile • Sanitary



TOTO®

Showrooms

BGC

Parkwest 36 St., Taguig City

ORTIGAS

CW Home Depot - Ortigas, Pasig City

ALABANG

CW Home Depot - Westgate, Muntinlupa City

Scan now:



STONE • TOPS • WOOD • TILE • SANITARY

  @globalhomeph    + 63 917 818 8088

www.globalhome.com.ph