

# Listone Giordano

Why

# Listone Giordano

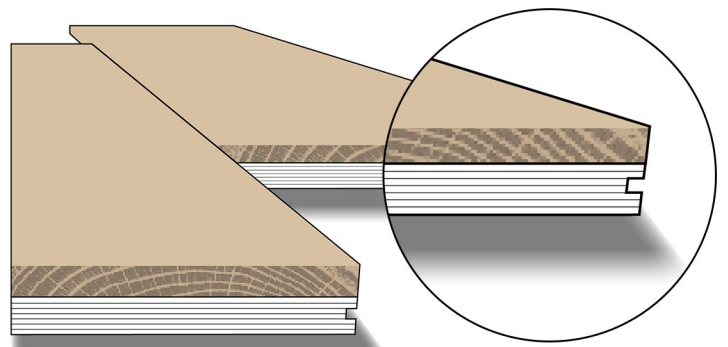


## Multilayer Technology

- **Patented** innovation by Prof. Guglielmo Giordano
- **150-180 Years old** French oak tree
- Resistance to huge **foot traffic**
- Intertwined and **layered** birch wood
- **Crosscuts** provides flexibility and improved elastic performance
- Birch wood fiber is **stronger** and stable than the pine wood materials
- Excellent level of **stability**

## High precision of the joints

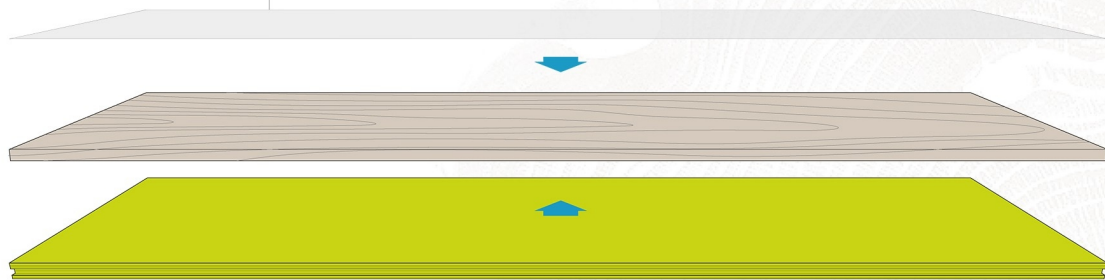
- **Tongue and groove system**
- **Ready to walk on** and complete flat and even surface
- Mechanical **precision** and cut using diamont-tip



# Why Listone Giordano

## Crystalcare® Protection

- Crystalcare® is a highly effective broad-spectrum **antibacterial** product
- **First wood flooring** to integrate the special action of Crystalcare® into its varnishes
- **Bacterial load** is reduced by more than 95% in just 24 hours (ISO 22196:2007)
- **Non-toxicity** of varnishes
- Special **UV dried finishes** with a 100% dry residual (w/o any solvents)



### Naturplus2

Solvent-free varnish coating, which emphasizes the wood's grain and authenticity.

### Oleonature

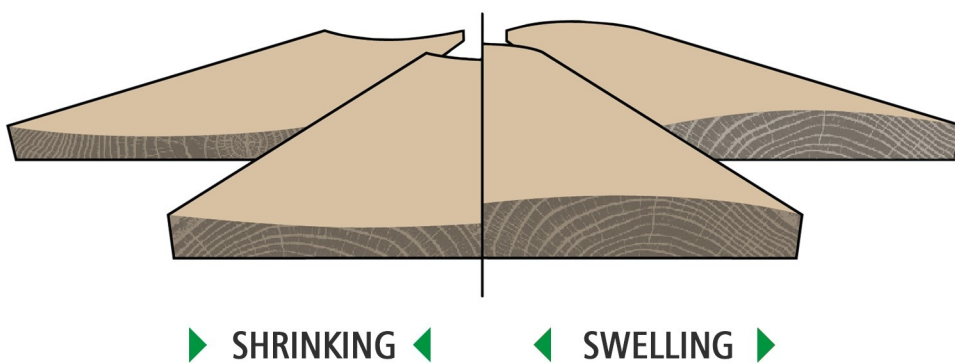
Special finish made with vegetable extracts, provide high performance natural oil protection for wood.

### Invisible Touch

Special water-based finish that dries naturally and preserves the original colour and texture of different types of wood.

# Why Listone Giordano

## Resistance to Humidity and Thermal Condition



- Thanks to its multilayer technology engineered wood has a **better performance** in humid location.
- **More stable** and resistant to warping
- Intertwined layer and **controlled** expansion and contraction

## Support Technology

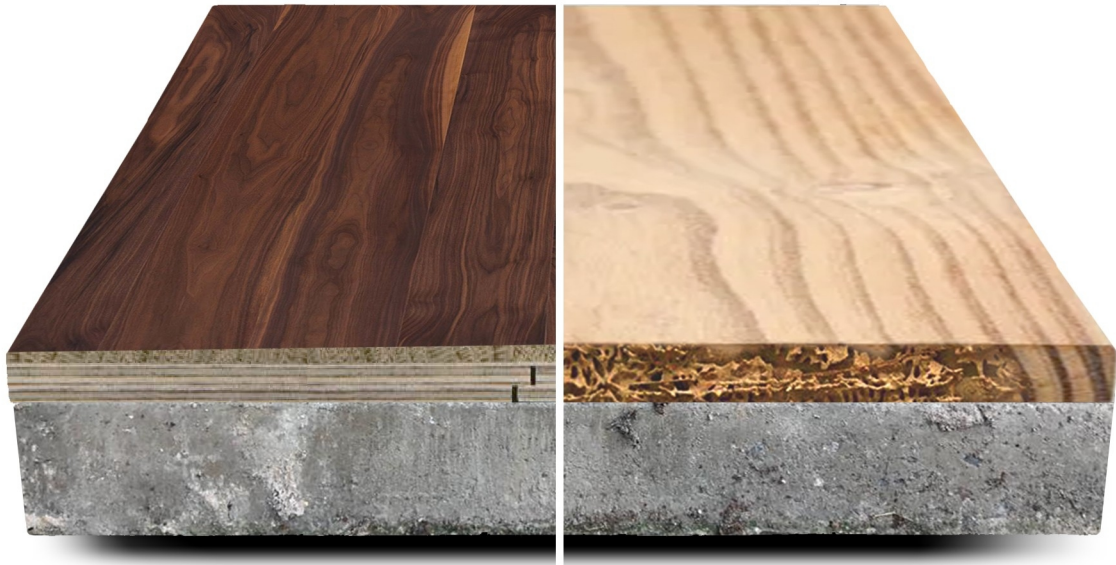
- Multi-layer provides the greatest level of **stability**.
- Highest **thermal efficiency** and most comfortable
- **Mechanically precised** and safe



Why

# Listone Giordano

## Quality



### Engineered Wood

- Multi-layer support provides high level of **stability**
- **Crystalcare®** best protection for surface with common domestic liquids
- **Child-friendly** environment with Toy Certification (EN71-3)
- Automatically **protects surfaces** from microbes and pathogenic agents
- **Resistant** to huge foot traffic

### Solid Hardwood

- **Cupping** and **crowning** due to absorption of excess moisture
- Stucco **deterioration** and dirt accumulation
- Without extra treatment, **termites** are attracted and likely to infest
- Absorb water seepage and build **molds**
- **Uneven surface**. Irregularities in the base support show up on the surface

Why

# Listone Giordano

## Installation



### Engineered Wood

- **Glue-down** application and without hollow sound
- **Direct application** is highly efficient and stronger base support
- **Ready** to be walked on no treatment required after installation
- No sanding or polishing needed once it has been laid, **no waiting**
- **Extraordinary precision joints** tongue and groove system and cut using diamond-tip

### Solid Hardwood

- **Intricate** application and required blind nailing
- **Sub-flooring** application before hardwood
- **Need to stabilize** the planks for few weeks after installation
- Required **crack filling, sanding** and **polishing** after installation
- **Irregular** edge and surface of hardwood and splinters problem

Why

# Listone Giordano

## Maintenance



### Engineered Wood

- **Crystalcare®** Protection
- Use **normal mop** to wash and clean the floor regularly
- **Crosscuts** provides flexibility
- **Ready** to be walked on, no sanding or polishing needed
- More **practical** application and perfect anywhere in the house

### Solid Hardwood

- **Re-wax** the surface for continuous protection
- **Deep clean** to remove dirt, oil and grime build-up over time
- **Absorb** water and retain smell
- Develop unpleasant **wood stain odor** over time
- **Costly** maintenance to maintain looks and durability

# certification

---



The mark of responsible forestry

## FSC®

International certification of the chain of custody which identifies those products containing wood originating from forests who have been managed in a correct and responsible way.



## PEFC™

International certification for the chain of custody ensuring the sourcing of raw materials from eco-sustainable managed forests.



## ISO 9001

Company management system certification for quality.



## ISO 14001

Certification of the environmental management system.



# certification

---



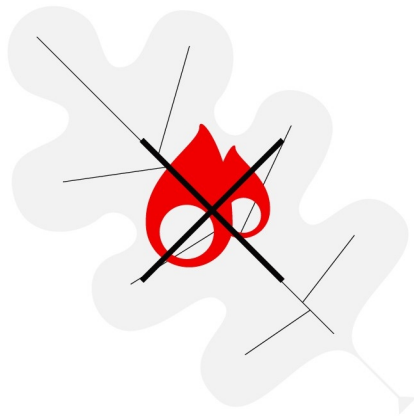
## FRENCH CERTIFICATION EMISSIONS OF VOLATILE ORGANIC COMPOUNDS

Imposes all manufacturers of building materials to declare VOC emissions in the form of emission classes and requires mandatory labelling of products.



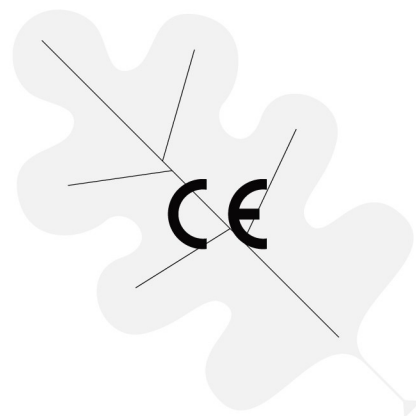
## TOY CERTIFICATION

Listone Giordano finishes have been approved in keeping with EN71-3 regulations that ensure products are safe for children to play with.



## REACTION TO FIRE

Listone Giordano wood floors were determined on the basis of tests conducted in accordance with EN 13501-1 or classified as required by EN 14342: 2013.



## CE CERTIFICATION

Listone Giordano strictly complies to all CE rules related to wood floors.

# certification

---



## FORMALDEHYDE

Performs severe tests which show percentages largely below the limits set up by the class E1 regulation, which is amongst the strictest European regulations (UNI EN 14342).



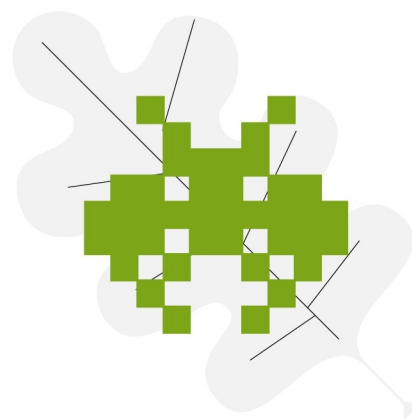
## CARB2/TSCA TITLE VI CERTIFICATION

The plywood panels used for Listone Giordano wood floors are in compliance with US TSCA Title VI and CARB phase 2 Formaldehyde emissions.



## TÜV PROFICERT-PRODUCT INTERIOR

Certifies that Listone Giordano 2-layer wood floors guarantee compliance with health and quality criteria selected by TÜV Hessen.



## LISTONE GIORDANO CRYSTALCARE. THE ANTI-BACTERIA FINISHING

A simple additive incorporated in Naturplus2, Invisible Touch and Oleonature finishes ensures an anti-bacteria certification granted by CATAS s.p.a according to ISO 22196:2007 regulation.

# Listone Giordano®

## SHOWROOM

<b>Ortigas</b> .....	<b>CW Home Depot</b> Doña Julia Vargas Ave., Ortigas, Pasig City
<b>BGC</b> .....	<b>MC Home Depot</b> 32nd St., Fort Bonifacio - BGC, Taguig City
<b>BGC</b> .....	<b>Park West (Soon to open)</b> 36th St., Fort Bonifacio - BGC, Taguig City
<b>Alabang</b> .....	<b>CW Home Depot</b> West Gate Alabang, Muntinlupa City
<b>Q.C.</b> .....	<b>CW Home Depot (Soon to open)</b> Commonwealth Ave., Quezon City



Contact Us  
(0917) 818 - 8088

[www.globalhome.com.ph](http://www.globalhome.com.ph)

**Globalhome™**  
Stone • Tops • Wood • Tile